

Features

- ◇ Keep vacuum level of the system in case of power failure or vacuum generator failed.
- ◇ Small size, can be used in narrow space.



How to order

ZVCM - M5M

①

②

① Series

ZVCM

② Connection thread to vacuum pump

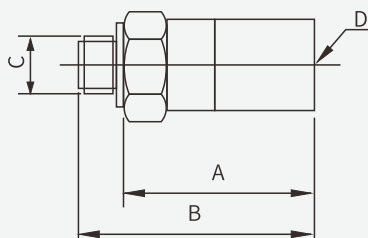
M5M - M5×0.8Male thread

G1M - G1/8Male thread

Technical parameters

Model	Effective cross-sectional area when valve core not works (mm ²)	Fluid	Max. vacuum pressure range (kpa)	Filtration accuracy (um)
ZVCM-M5M	2.0	Air	-100~0	40
ZVCM-G1M	5.0			

Dimensions (mm)



Model	A	B	C	D
ZVCM-M5M	16	20	M5x0.8	M5x0.8 Thread depth 6
ZVCM-G1M	23	28.5	G1/8	G1/8 Thread depth 8.5